



MONTHLY MEMBERSHIP PROGRESS REPORT

District 43 C

Results as of: 06/30/2018

GMT: STEVE ANTON

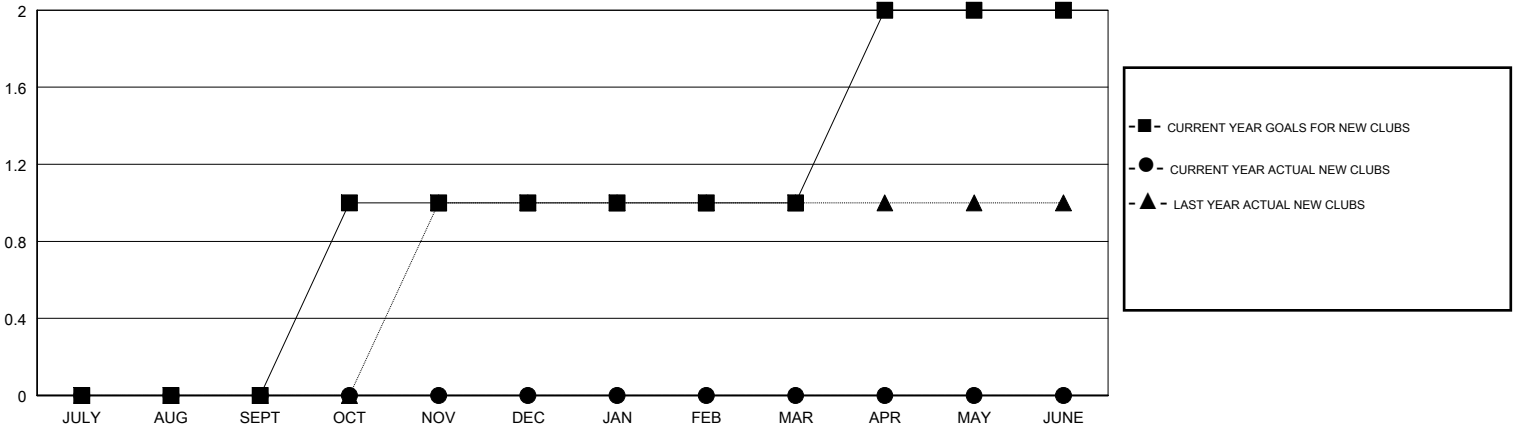
LOCATION KENTUCKY

GMT CA

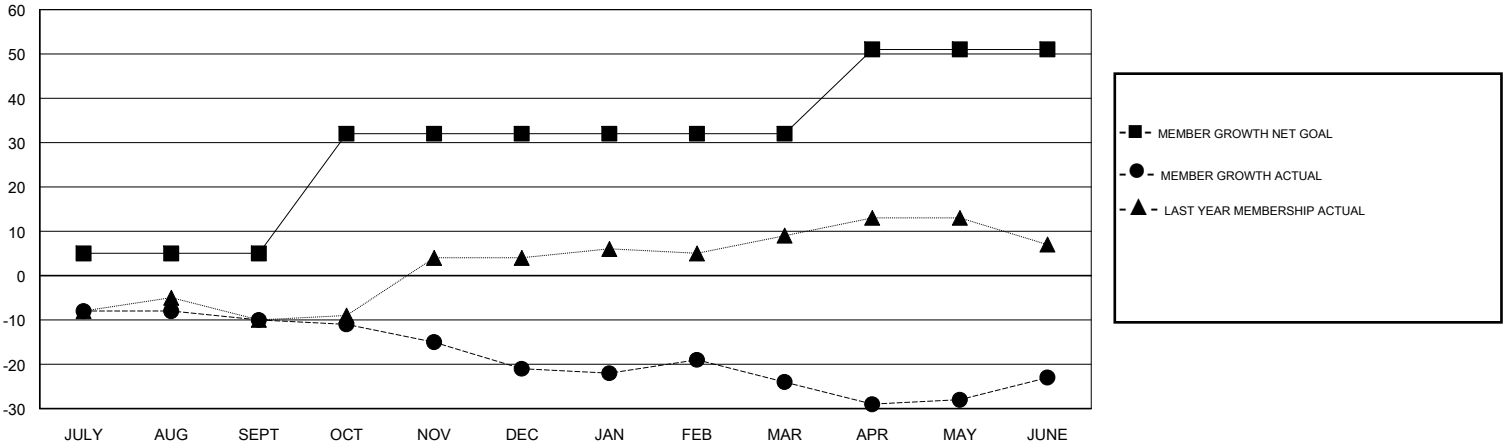
Clubs			
RESULTS FOR 2017-2018			
QUARTER	NEW CLUB GOAL	NEW CLUBS	DROPPED CLUBS
JULY/AUG/SEPT	0	0	0
OCT/NOV/DEC	1	0	0
JAN/FEB/MAR	0	0	0
APR/MAY/JUNE	1	0	0

Members			
RESULTS FOR 2017-2018			
QUARTER	MEMBER GROWTH NET GOAL	MEMBER GROWTH ACTUAL	DROPPED MEMBERS ACTUAL (including transfers)
JULY/AUG/SEPT	5	6	16
OCT/NOV/DEC	27	6	16
JAN/FEB/MAR	0	9	10
APR/MAY/JUNE	19	29	24

GOALS AND ACTUAL NEW CLUBS CUMULATIVE



GOALS AND ACTUAL MEMBERS CUMULATIVE



DROPPED CLUBS: 0	15 CLUBS OF 26 ADDED 1 OR MORE NEW MEMBERS	<u>GENDER DISTRIBUTION</u> MALE 385 (61.70%) FEMALE 239 (38.30%) Women Percentage Fiscal Year Goal: 40%
<u>DROPPED MEMBERS</u> DECEASED 10 CLUB CANCELLED 0 OTHER 56 TOTAL 66	CLICK HERE FOR CUMULATIVE MEMBERSHIP DATA	TOTAL FAMILY UNIT MEMBERS 0 FAMILY MEMBERS PAYING HALF DUES 0